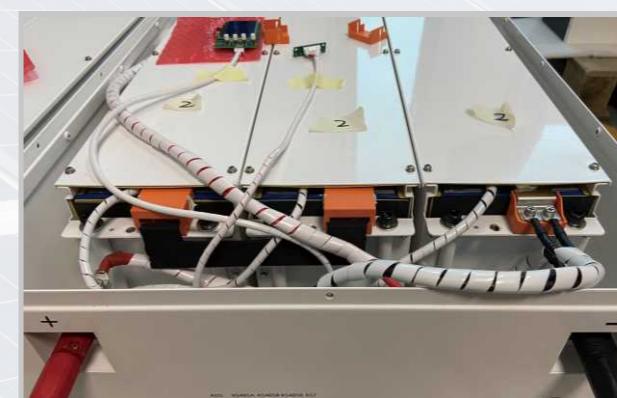




SHENZHEN LITU NEW ENERGY TECHNOLOGY CO.,LTD

PRODUCT SPECIFICATIONS

Battery Specifications			
Model No	YP PW-5KW	YP PW-7KW	YP PW-10KW
<i>Nominal Parameters</i>			
Voltage	48 V / 51.2V	48 V / 51.2V	48 V / 51.2V
Capacity	100Ah	150Ah	200Ah
Energy	4.8 / 5.12 Kwh	7.2 / 7.68 Kwh	9.6 / 10.24 Kwh
Dimensions (L x W x H)	740*530*200mm	740*530*200mm	740*530*200mm
Weight	58.5 / 68 kg	75.0 / 85 kg	96.5 / 110 kg
<i>Basic Parameters</i>			
Life time(25°C)	20 years		
Life cycles(80% DOD, 25°C)	6000 Cycles		
Storage time / temperature	5 months @ 25°C; 3 months @ 35°C; 1 month @ 45°C		
Operation temperature	-20°C to 60°C @60+/-25% Relative Humidity		
Storage temperature	0°C to 45°C @60+/-25% Relative Humidity		
Lithium Battery Standard	UL1642(Cell) , IEC62619,UN38.3, MSDS ,CE-EMC		
Enclosure protection rating	IP21		
<i>Electrical Parameters</i>			
Operation voltage	48 Vdc	48 Vdc	48 Vdc
Max. charging voltage	54 Vdc	54 Vdc	54 Vdc
Cut-off Discharge Voltage	42 Vdc	42 Vdc	42 Vdc
Max. charging and discharging current	100A(4800W)	120A(5760W)	120A(5760W)



www.youth-power.net

Email : sales@youth-power.net